



Clarence Kindergarten

#1, Clarke Road, Richards Town, Bengaluru - 560 005

June 24, 2024

UNIFORM MATERIAL, T-SHIRTS, TRACK PANTS & SOCKS MONTESSORI 1 (MONT 1) – ACADEMIC YEAR 2024-25

Dear Parents,

Greetings from Clarence Kindergarten!

1. The uniform material for students of **Montessori 1** has been received and ready for sale distribution with the uniform vendor. All parents of students of **Montessori 1** are requested to purchase the uniform material, t-shirts, track pants & pairs of socks from the authorised supplier. Kindly purchase adequate pairs of socks that can be used through the year and ensure that your child wears only the prescribed school socks.

2. The address of the store of the authorised supplier is given below. All purchases can be made at this venue upon physical inspection of the products.

**#73 Shree Complex
Unit No. 109, Mezzanine Floor
Sivan Chetty Garden
Bengaluru – 560 042**

3. The location for the purchase and distribution of uniforms will be open from 9:30 a.m. to 5:30 p.m. The location for sale of uniform will be open for sale till June 29, 2024 (Saturday) with June 28, 2024 (Friday) being observed as a holiday. Suitable arrangements for sale of uniform after June 29, 2024 will be made and intimated separately. The store will display the complete price list of uniforms (including for track pants, t-shirts and socks) at the location. The quantity of cloth and price for one set of uniform cloth for both girls' and boys' uniform are tabulated below. Parents are kindly requested to ascertain the amount of cloth required, from their tailors, prior to visiting the store. The correct quantity of cloth bought, should be determined by the tailor's specification. The design for the uniform is placed at Appendix.

PRICE LIST FOR BOYS AND GIRLS

CLASS	LENGTH OF CLOTH		1 Set Regular Red and Black Checked Short and Brown Shorts Material (Cost with 20% Discount)
	SHIRT	SHORTS	
Regular Size	.75 m	.55 m	₹460
Large Size	1.10 m	.75 m	₹590

**NAME & CONTACT NUMBER OF SUPPLIER: H & F Clothing & Co.
Mr. Atheeq ur Rehman - 8095830493/ 8951682145**

General Instructions and Requirements for uniform

The purpose of the uniform is to exhibit modesty, equality and uniformity among all students irrespective of religion, caste, creed or economic status. All students should wear the school uniform for all school functions and for attending classes. Each student should be equipped with a minimum of two sets of uniforms. The sports uniform is to be worn on Fridays.

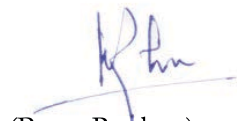
Uniforms are to well-maintained, properly fitting, clean and ironed. Socks should not be sagging. Shoes are to be clean.

- a. Socks: Boys and girls are to wear black School socks for daily use. All socks should be calf-length. For special occasions boys and girls will wear white school socks (with coloured bands).
- b. Shoes: The black sports shoes must be fully black with no other colour.
- c. Belt for boys: If worn, should be simple and black in colour.
- d. It is important that all items of the uniform conform to the specifications laid down by the School in terms of design, colour, material and length.

We would kindly request all parents and students to strictly adhere to the above directions regarding wearing of School uniforms. In case of any queries or difficulties with procuring uniforms please feel free to contact us at administrator.chs@clarenceschool.in

Thanking you

Yours sincerely,



(Prem Reuben)
Administrator

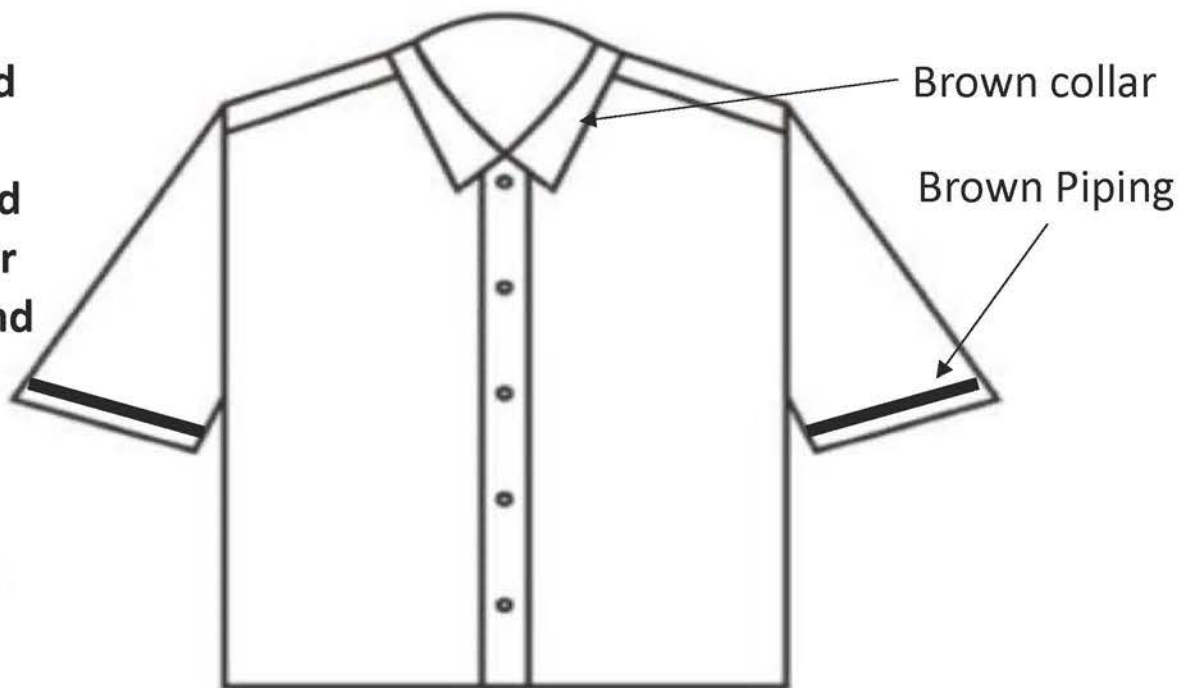
CLARENCE KINDERGARTEN , BENGALURU – 560005

PATTERN OF SCHOOL UNIFORM

ACADEMIC YEAR 2024-25

FOR MONTESSORI 1 (BOYS AND GIRLS)

**Red and
Black
Checked
Shirt for
Boys and
Girls**



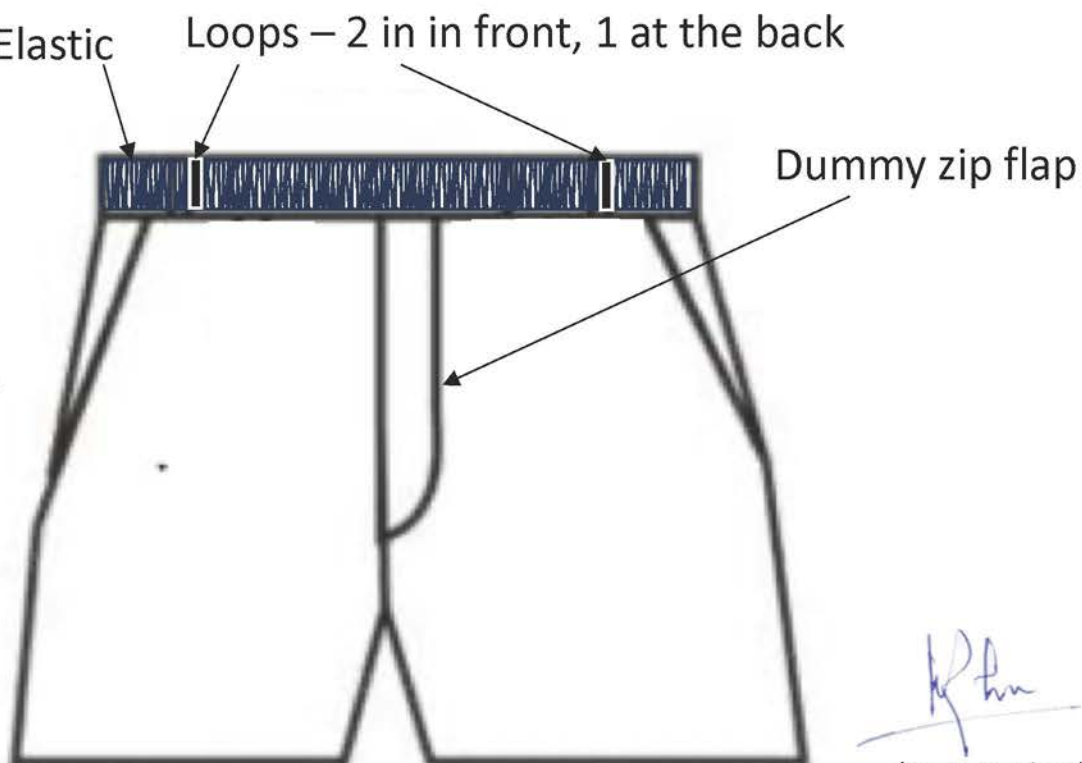
Brown collar

Brown Piping

Elastic

Loops – 2 in in front, 1 at the back

**Brown
Colour
Shorts for
Boys and
Girls**

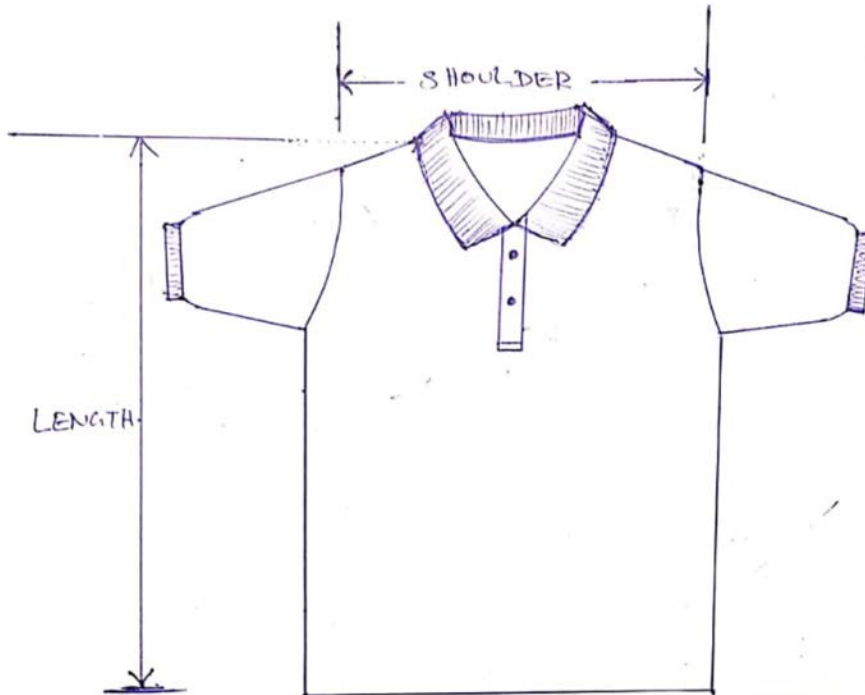


Dummy zip flap

(Prem Reuben)
Administrator

Length of the shorts – ½ inch above knees

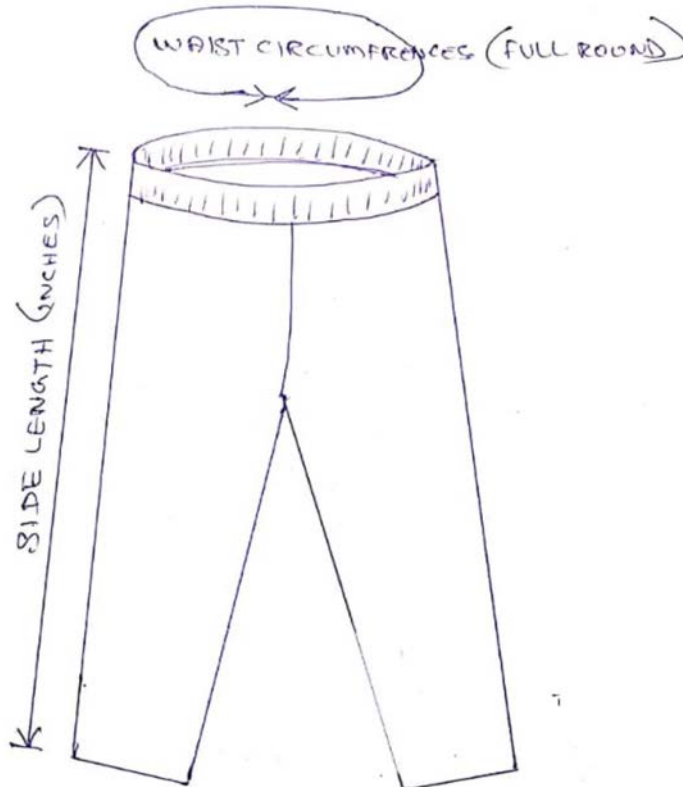
SPORTS UNIFORM – SIZE GUIDE FOR MONTESSORI 1 (BOYS AND GIRLS)



POLO SHIRT

ALL MEASUREMENTS IN INCHES

SIZE	16	18	20	22	24	26	28	30	32	34	36	38	40	42	44	46
LENGTH	16 1/4	16 3/4	17 1/4	17 3/4	18 1/2	19 1/4	20	21 1/2	23	24	25	26	27	28	29	30
SHOULDER	9	9 1/2	10	10 1/2	11	11 1/2	12	12 1/2	13	14	15	16 1/4	17 1/4	18 1/2	19 1/2	20 1/2



TRACK PANT

ALL MEASUREMENTS IN INCHES

SIZE	16	18	20	22	24	26	28	30	32	34	36	38	40	42	44	46
WAIST WIDTH CIRCUMFERENCE	15	16	17	18	19	20	21	22	23	25	27	29	31	33	35	
SIDE LENGTH	21	22	23	24 2/5	26	28	30	32	34	36	38	40	42	44	45	

P. Reuben
(Prem Reuben)
Administrator